

Which direction?

Today we will be:

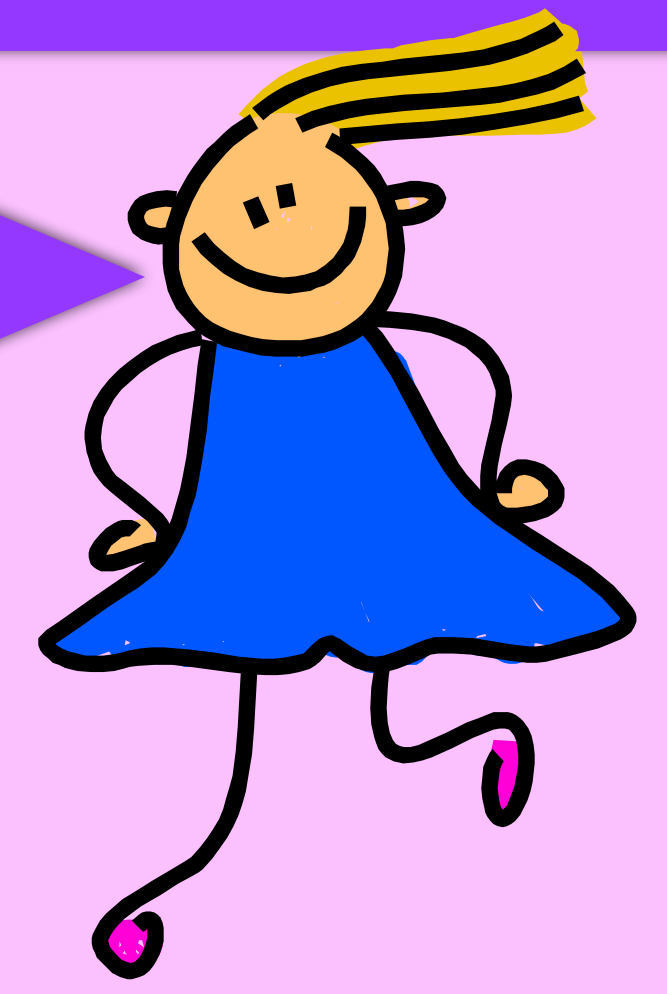
Using the language of position to solve problems.

Play Simon says...



“Simon says place your left hand in front of your tummy.”

“Simon says take one step backwards.”



top, middle, bottom, on top of, in front of, above, between, around, near, close, far, up, down, left, right, forwards, backwards, inside, outside, turn, clockwise, anticlockwise, whole, half, quarter

What does this word mean?
Can you use it in a sentence?



between



Think, pair, share.

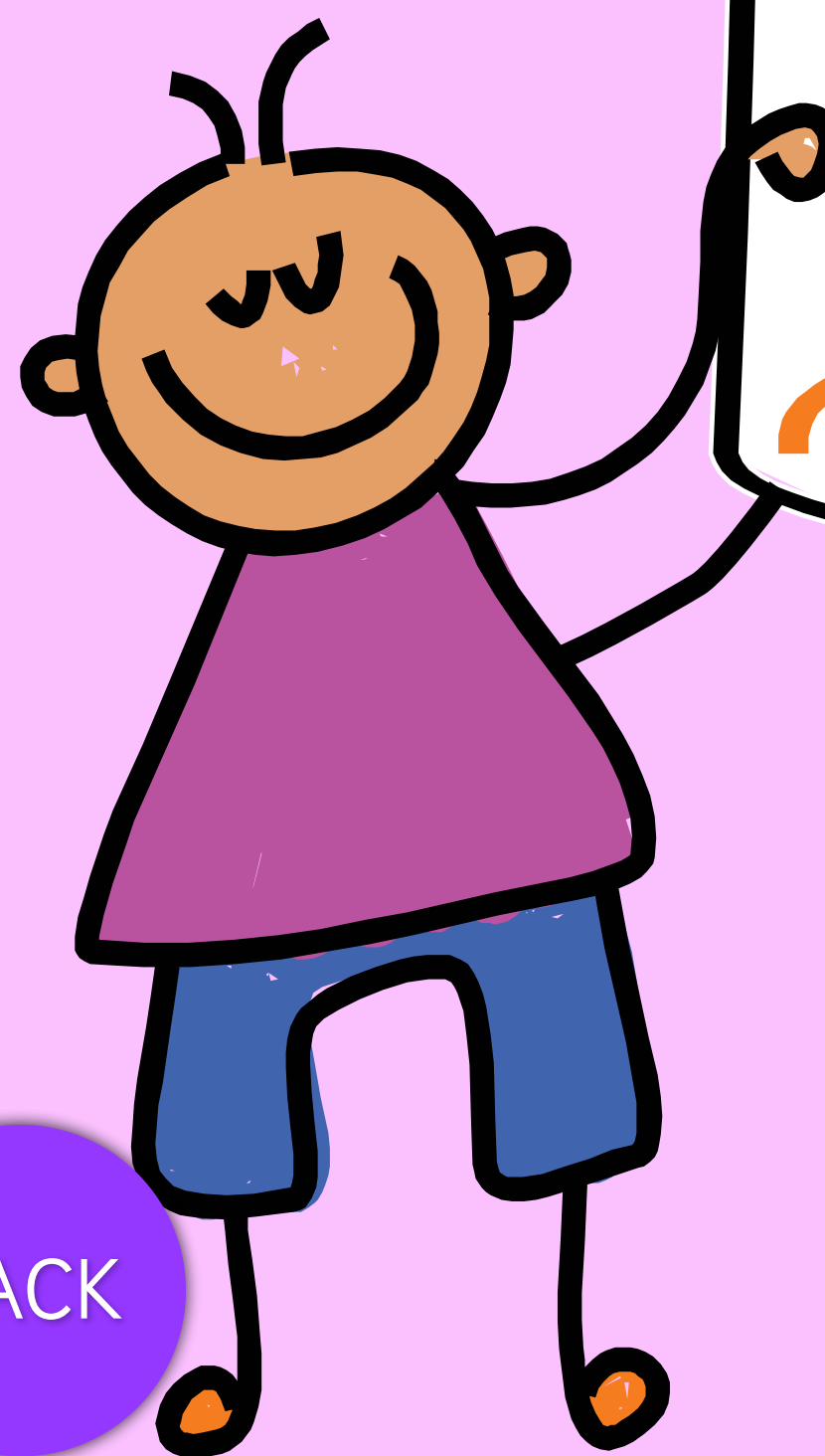
BACK

NEXT

What does this word mean?
Can you use it in a sentence?



clockwise



Think, pair, share.

BACK

NEXT

What does this word mean?
Can you use it in a sentence?



backwards



Think, pair, share.

BACK

NEXT

What does this phrase mean?
Can you use it in a sentence?



half turn

Think, pair, share.

BACK

NEXT

We need a
volunteer!

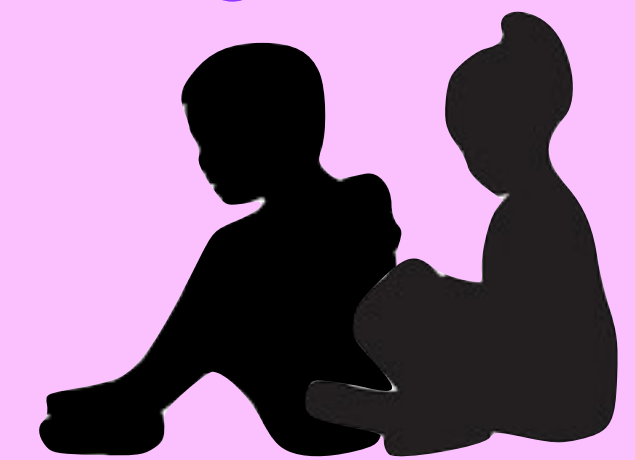
Everyone needs to face the
same way. The volunteer will
stand at the front, then the
teacher will sit, then the rest
of the class will sit.



volunteer



everyone else



teacher

BACK

NEXT

Your teacher is going to do a movement. Your challenge is to describe the movement so the volunteer can do it, even though they didn't see what your teacher did.

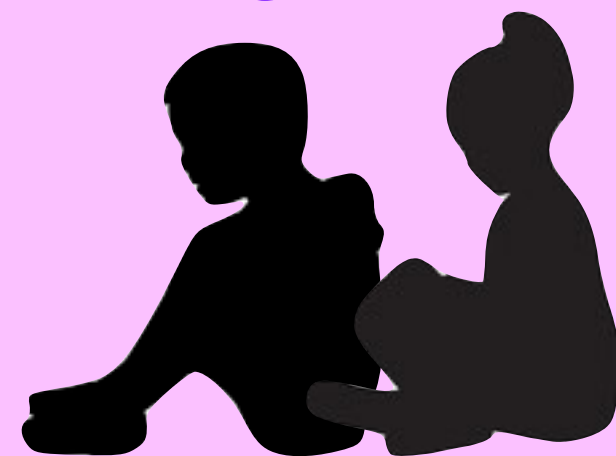


volunteer



teacher

everyone else



top, middle, bottom, on top of, in front of, above, between, around, near, close, far, up, down, left, right, forwards, backwards, inside, outside, turn, clockwise, anticlockwise, whole, half, quarter

BACK

NEXT

Play I Spy...



I spy with my little
eye something **close**
to a table...

top, middle, bottom, on top of, in front of, above, between, around, near, close, far,
up, down, left, right, forwards, backwards, inside, outside, turn, clockwise,
anticlockwise, whole, half, quarter

BACK