

Let's compare length, height and mass!

Heavy or Light?

Name: \_\_\_\_\_

Date: \_\_\_\_\_

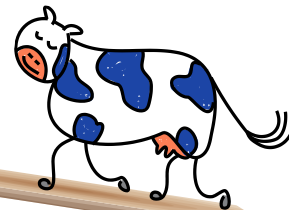
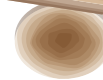


Read the sentence and tick the correct box.

Tick the lightest.



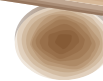
Tick the heaviest.



Tick the heaviest.



Tick the lightest.



Tick the heaviest.



Tick the lightest.

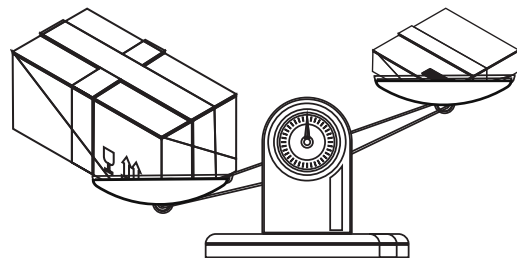
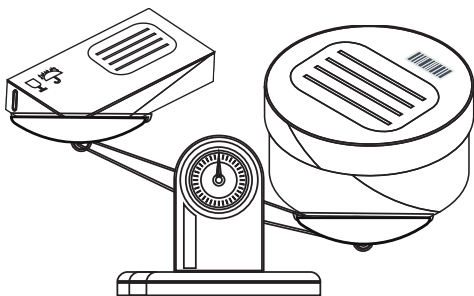
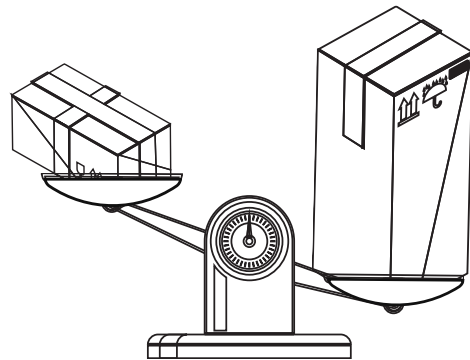
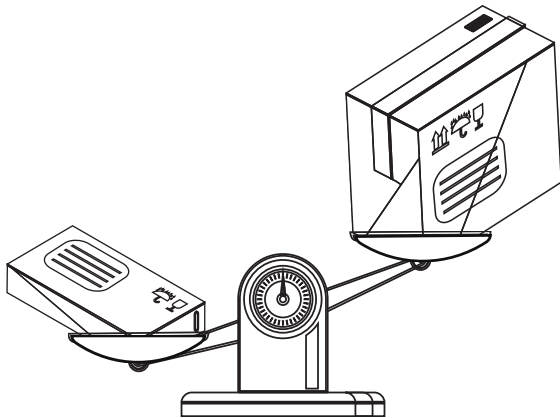
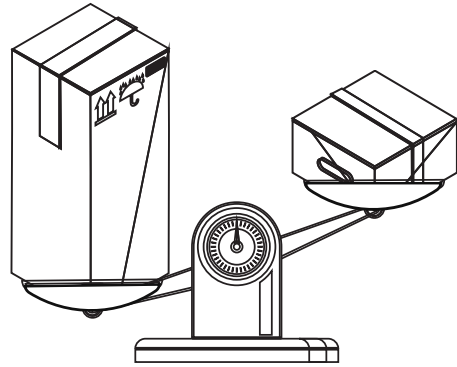
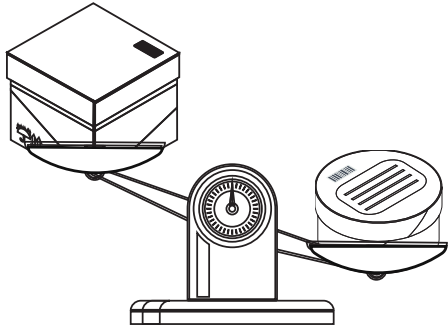


Name: \_\_\_\_\_

Date: \_\_\_\_\_



Can you colour the heavier parcels in red and the lighter parcels in green?



Let's compare length, height and mass!

Which Weighs More?

Name: \_\_\_\_\_

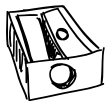
Date: \_\_\_\_\_



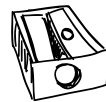
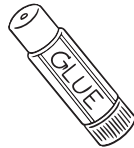
First colour in which item you predict will be the heaviest. Then use the scales to see if you were right by colouring in the actual heaviest item.

Prediction

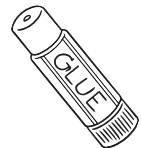
Actual



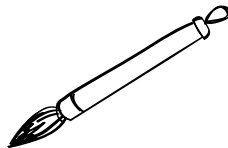
or



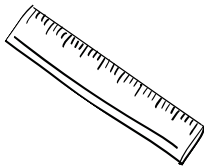
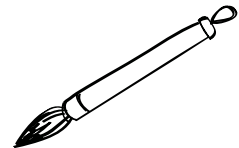
or



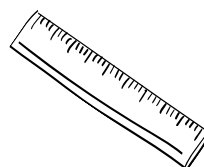
or



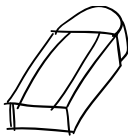
or



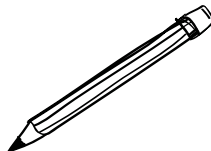
or



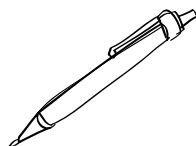
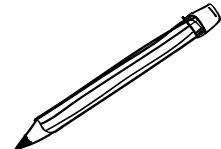
or



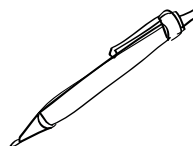
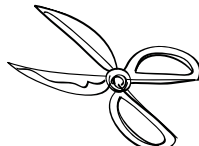
or



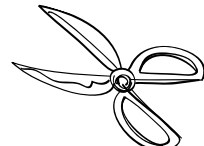
or



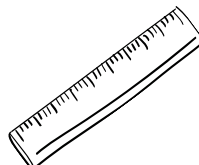
or



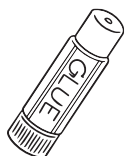
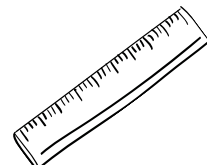
or



or



or



or



or



or



or



Name: \_\_\_\_\_

Date: \_\_\_\_\_



Today I have been describing and comparing different weights.



Stick your photo here

Which resources did you use?

Blank space for writing resources used.

Draw the face on the bee to self-assess your work.

